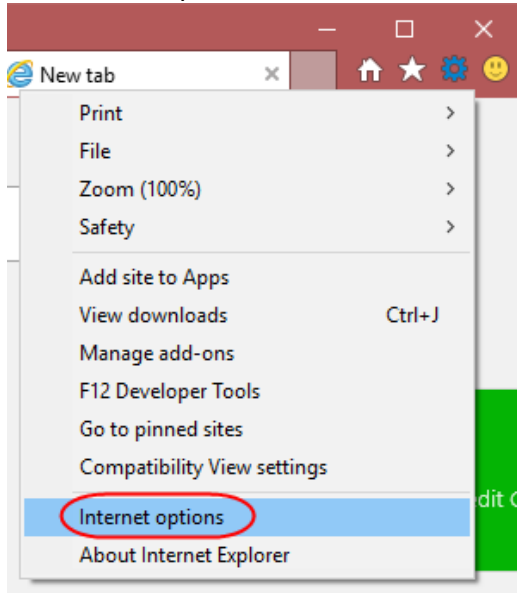


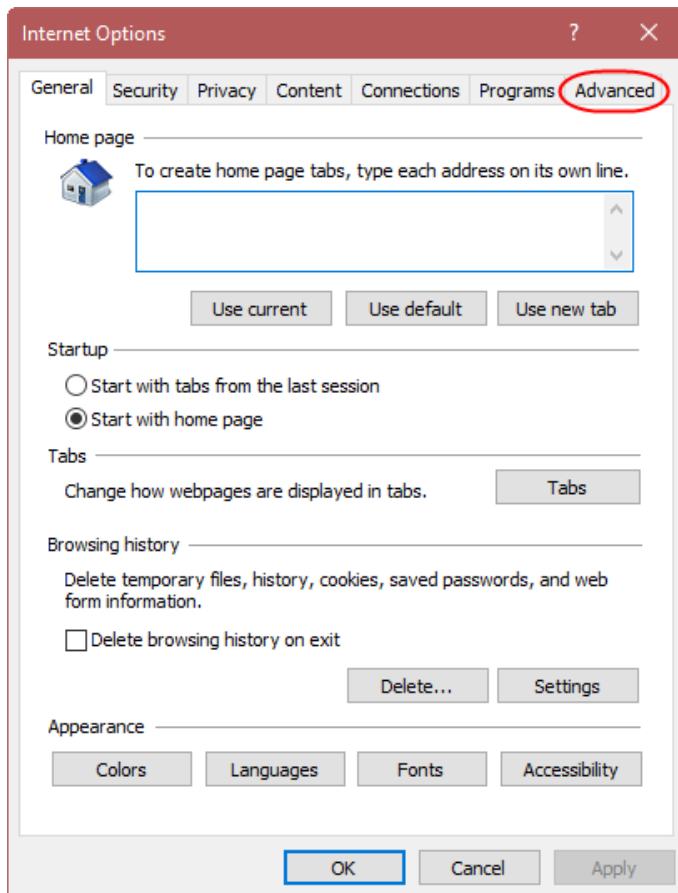
How to Enable Transport Layer Security 1.2 in Your Browser

Internet Explorer

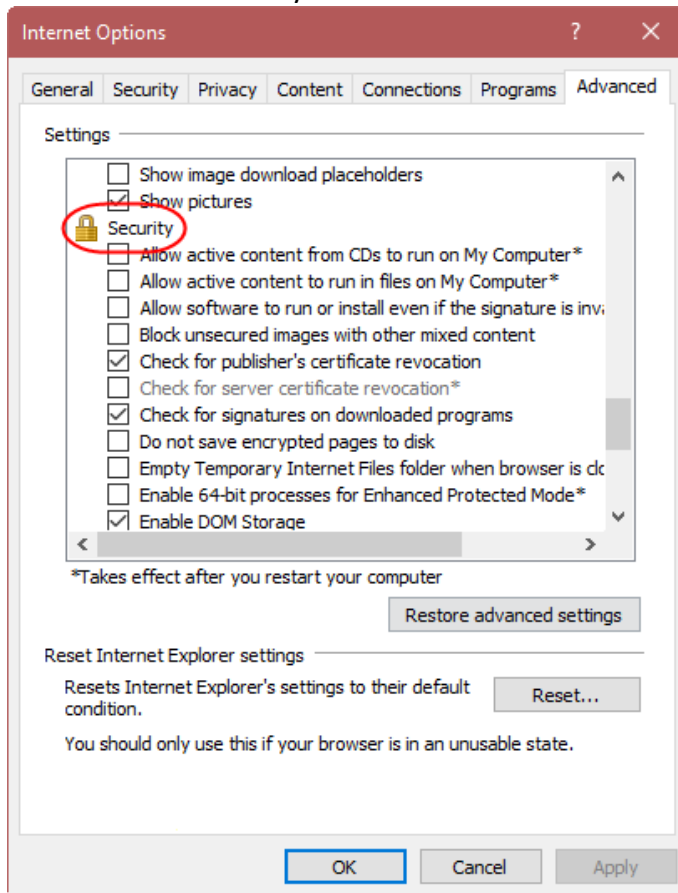
1. Select Tools from the browser menu bar.
2. Select Internet Options.



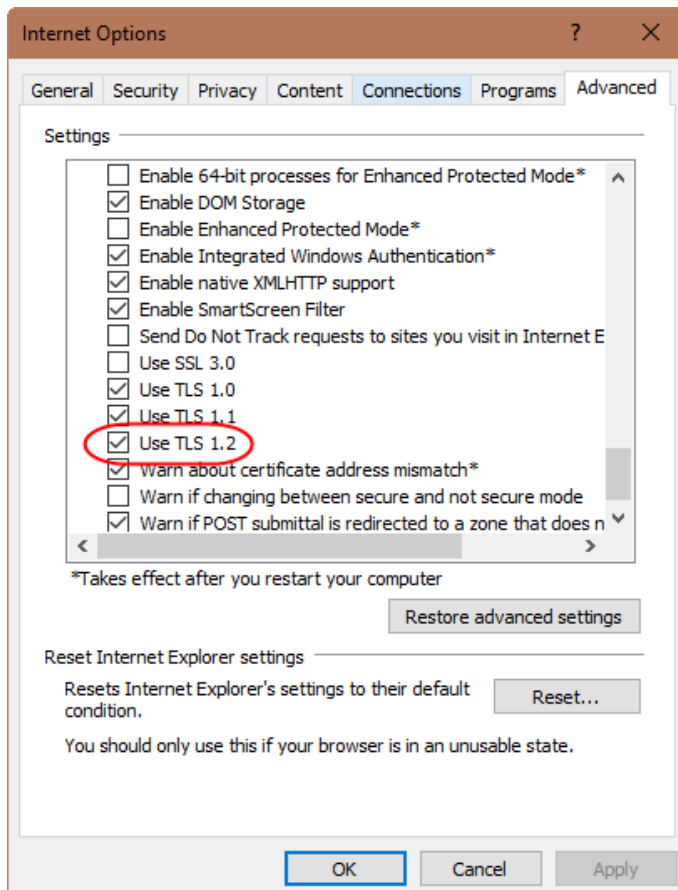
3. Select the Advanced tab.



4. Scroll down to Security section.



5. Check Use TLS 1.2.



6. Select OK.
7. Close your browser for the new settings to take effect.

Microsoft Edge

Edge uses TLS encryption by default and there is no setting to enable

Firefox

Firefox uses TLS encryption by default and there is no setting to enable

Safari (Windows, Mac)

Safari uses TLS encryption by default and there is no setting to enable

Chrome (Windows, Linux, Mac)

Chrome uses TLS encryption by default and there is no setting to enable